

# SHARENET ADVANCED CHARTS V1.1

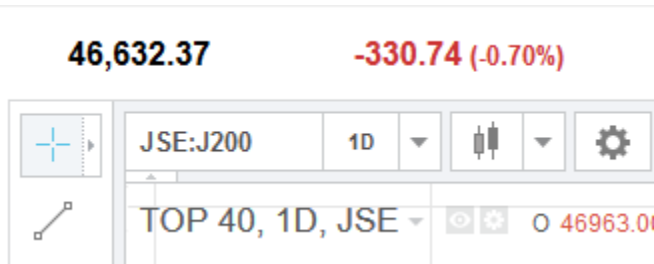
The following enhancements have been made to Advanced Charts V1.0

## 1. Bug fixes

- a. Removed null candles that appear after 16H45 to 17H10
- b. First candle of the day builds immediately on market open

## 2. Streaming prices bar

If you have live prices Advanced Charts subscription then real-time streaming prices are shown on the top left of the chart as displayed below:



Note that candles are only updated every 1 minute with the live pricing subscription

## 3. SIMEX virtual Trading Account

Click on the gear-icon (top right) then click on "Simex Settings". Enter a nickname and then click SAVE CHANGES to create your [Simex](#) JSE real-time simulation account. SIMEX is South Africa's first real-time simulated stock trading platform. The system uses the same principles as trading in the real market giving you access to the same shares, portfolios and prices as seen on the JSE in real-time.

The screenshot shows the Sharenet website interface. The top navigation bar includes the Sharenet logo, a search bar with 'Enter company or code', a 'QuickShare' dropdown, a 'Go' button, and a 'Log out' button. Below the navigation bar is a menu with options: HOME, MARKETS, ONLINE TRADING, ACCOUNTS, PORTFOLIOS, WATCHLISTS, NEWS, a notification bell, the time '10:52:45', and SUPPORT. The main content area is titled 'Settings' and has several tabs: General, Trade Accounts, Display Formats, Subscription Settings, and Simex Settings. The Simex Settings tab is selected and circled in red. It contains a 'Simex Nickname' field with a dropdown menu set to 'SIMEX' and a text input field containing 'Enter a nickname', which is also circled in red. There is a 'Reset Account Funds' checkbox and a 'Save changes' button.

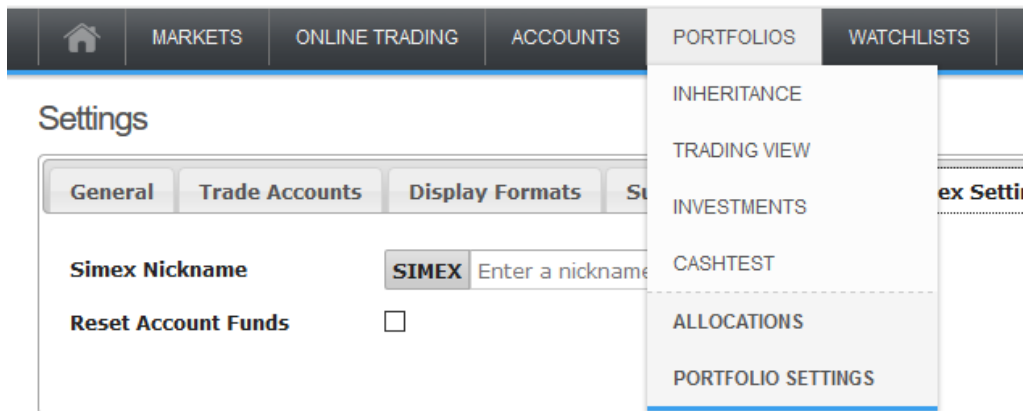
#### 4. Accounts

Click on ACCOUNTS to see your live (real-money) Sharenet Securities or Simex (simulated money) JSE trading account. Once selected you can add/delete remove shares from the account.



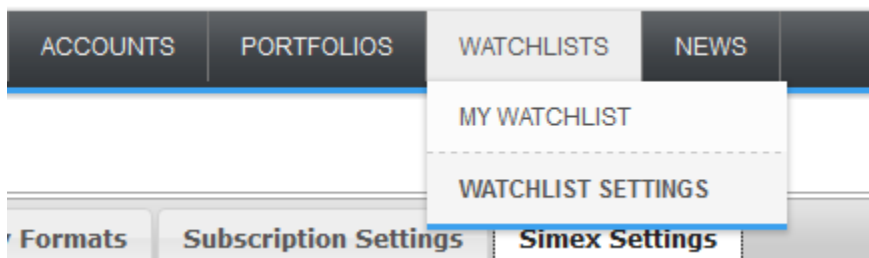
#### 5. Portfolios

Click on PORTFOLIOS to see your Sharenet Securities or Simex simulated JSE trading account portfolios that you have created. Once selected you can add/delete remove shares from the portfolio. You must have at least a live Sharenet Securities account or a SIMEX simulated JSE trading account in order to be able to create portfolios of JSE shares in the account.



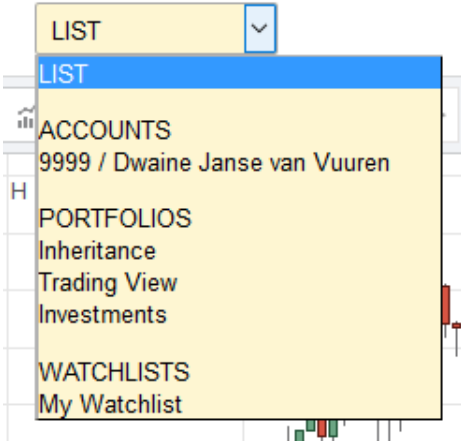
#### 6. Watchlists

Click on WATCHLIST to see your Watchlists that you have created. Once selected you can add/delete remove shares from the watch list. You do not need a live Securities Account or a SIMEX simulated JSE account to create watchlists.

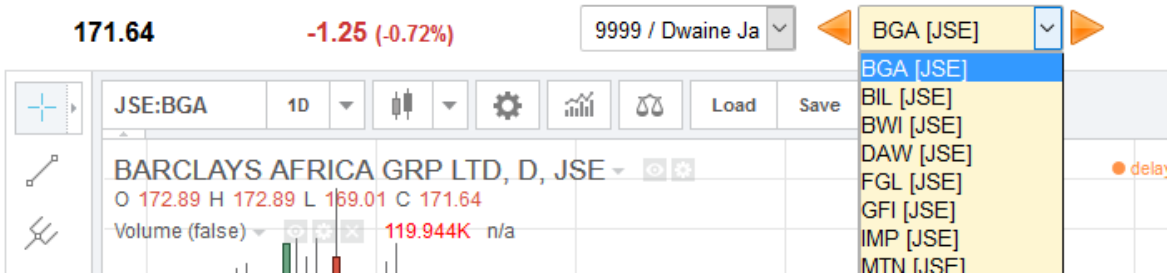


## 7. Share Selection Rotator

This gives you access to any Sharenet Securities live or SIMEX accounts and their respective Portfolios, in addition to any watchlists that you have created. Click on appropriate account/portfolio/watchlists to view shares that are currently in there:



Once you have selected an account/portfolio/watchlist from the list, you can rotate through all the shares to view them sequentially in Advanced Charts, or go directly to any share in the account/portfolio/watchlist to display their respective charts. This allows you to quickly scan through all the charts of the shares you are interested in without having to Load them from a saved template or having to enter their JSE short codes/names.



## 8. Spots

The following end-of day spots have been added:

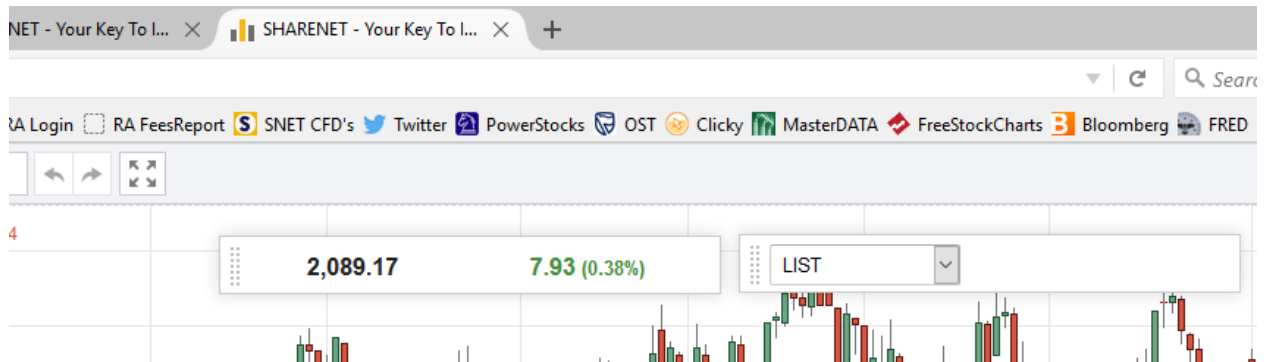
Stocks	ETF	Indices	Forex	Spots
FT100	LSE FTSE 100			
PLAT	PLATINUM LONDON PM FIX			
+BRN	BRENT CRUDE OIL			
GOLD	GOLD			
SP500	SP500			

## 9. Full Screen Mode resolution preservation

When selecting to go to full-screen mode, the resolution of the chart you are viewing (1-day, 1hour) is preserved when the full-screen chart opens.

## 10. Full Screen Mode Floating Real-Time Streamer & Share Selection Rotator

When triggering full-screen mode, a floating real-time streaming tab and a floating share selection rotator will appear on top of the chart. You can grab these and move them around anywhere you want on the screen.



The below example shows that the most logical area to move these floating tabs to, in order to prevent them obscuring your chart candles:

